
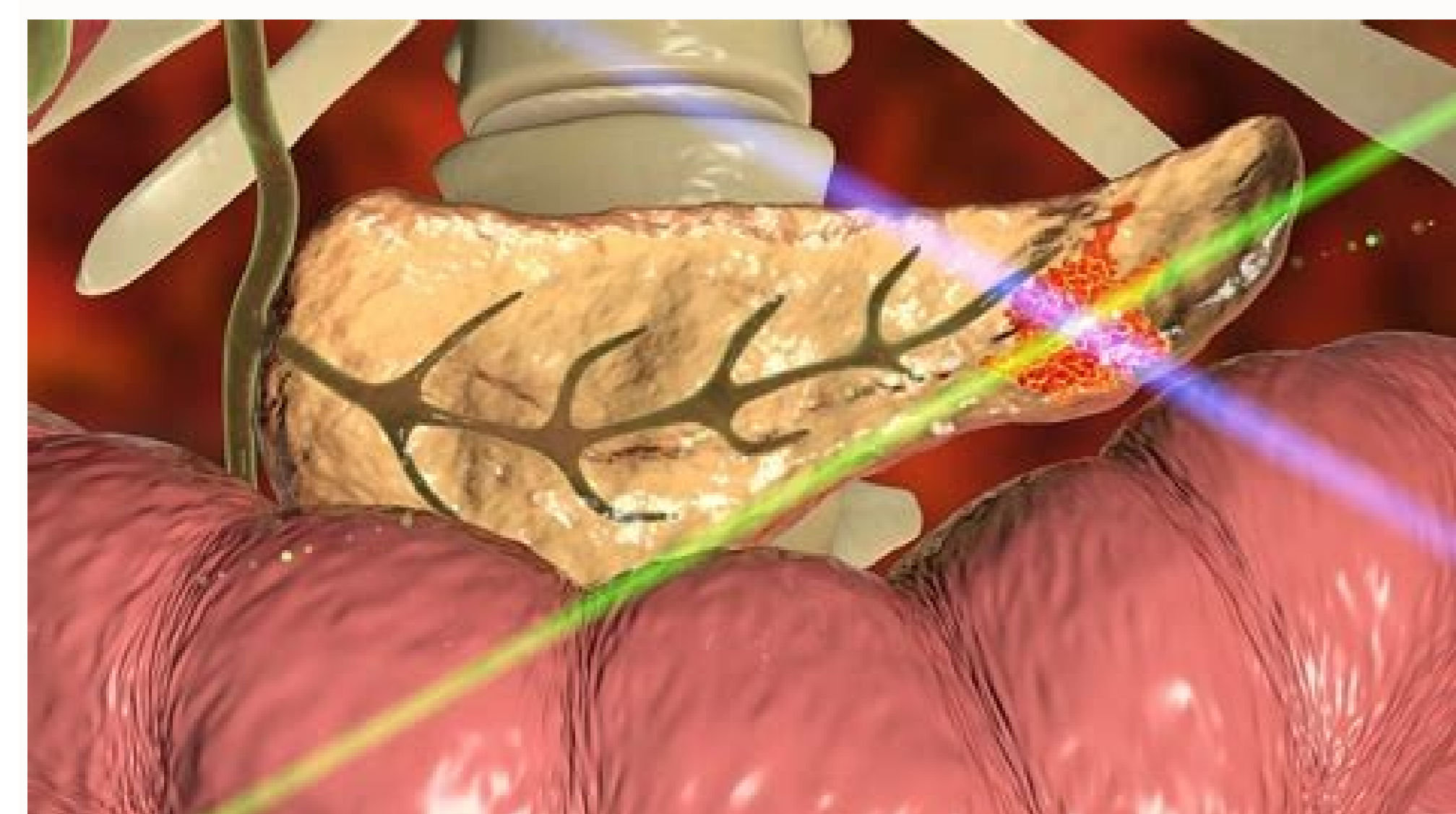


I'm not robot  reCAPTCHA

Open



Intestinal biopsy	Recommended blood tests	Comments
Not mandatory	Anti-tTG, anti-EmA, total IgA, and tests for HLA-DQ2 and HLA-DQ8	Allows for celiac disease diagnosis under certain conditions
Not mandatory	Anti-tTG, anti-EmA, and anti-DGP	Uses a diagnostic test available in certain countries
Mandatory	Anti-tTG and anti-DGP	Recommended in children
Mandatory	Anti-tTG, anti-EmA, and anti-DGP	Holds to the highest standard; cannot be replaced

terology; BSG, British Society of Gastroenterology and Nutrition; WGO, World Gastroenterological

